

# PRODUCT INFORMATION PACKET

Model No: 5KH39QN9091  
Catalog No: H230  
1/2, 1725, DP, 56, 1/60/115  
Open Drip Proof (ODP)



Regal and Marathon are trademarks of Regal Beloit Corporation or one of its affiliated companies.  
©2018 Regal Beloit Corporation, All Rights Reserved. MC017097E





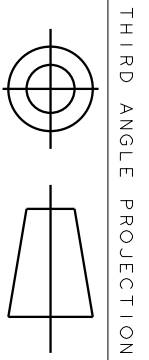
### Nameplate Specifications

Output HP	<b>0.50 Hp</b>	Output KW	<b>0.37 kW</b>
Frequency	<b>60 Hz</b>	Voltage	<b>115 V</b>
Current	<b>8.3 A</b>	Speed	<b>1725 rpm</b>
Service Factor	<b>1</b>	Phase	<b>1</b>
Efficiency	<b>62.6 %</b>	Duty	<b>Continuous</b>
Insulation Class	<b>B</b>	KVA Code	<b>P</b>
Frame	<b>56</b>	Enclosure	<b>Drip Proof</b>
Overload Protector	<b>N/R</b>	Ambient Temperature	<b>40 °C</b>
Drive End Bearing Size	<b>6203</b>	Opp Drive End Bearing Size	<b>6203</b>
UL	<b>Recognized</b>	CSA	<b>Yes</b>
CE	<b>N</b>		

### Technical Specifications

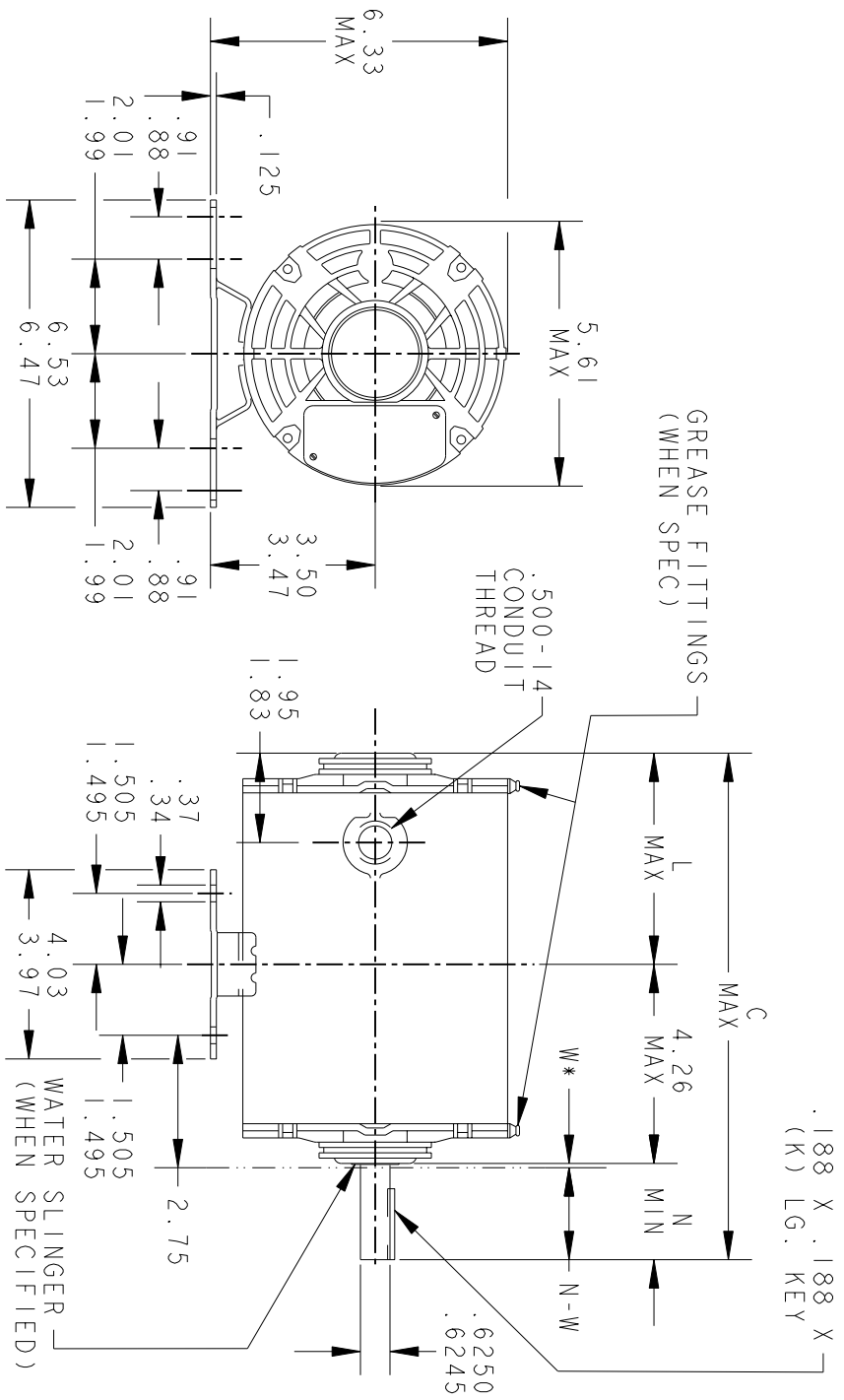
Electrical Type	<b>Split Phase</b>	Starting Method	<b>SM</b>
Poles	<b>4</b>	Rotation	<b>Selective Counterclockwise</b>
Mounting	<b>Rigid base</b>	Motor Orientation	<b>Any</b>
Drive End Bearing	<b>BALL</b>	Opp Drive End Bearing	<b>BALL</b>
Frame Material	<b>Rolled Steel</b>	Overall Length	<b>10.32 in</b>
Frame Length	<b>6.22 in</b>	Shaft Diameter	<b>0.630 in</b>
Shaft Extension	<b>1.88 in</b>		
Outline Drawing	<b>52A101998P2</b>	Connection Diagram	<b>52A105377AA</b>

This is an uncontrolled document once printed or downloaded and is subject to change without notice. Date Created: 06/29/2018



THIRD ANGLE PROJECTION

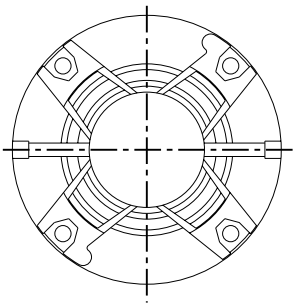
REVISIONS		DESCRIPTION	DATE	APPROVED
10	REDRAWN NO CHANGE	T196-22390	07/25/96	MDP
11	CHG TO RBC FORMAT PER IS05-1777		12/22/05	DURGA



\*W IS A CLEARANCE DUE TO VARIATION IN PARTS & ASSEMBLY.

PT	TYPE	GE SIZE	NEMA FR	C	K	L	N	N-W
7	K	33	56	9.51	1.38	3.42	1.88	2.01/1.79
6	KH	32	56	9.26	1.38	3.17	1.88	2.01/1.79
5	K	33	56Z	10.63	1.38	3.42	3.00	3.13/2.91
4	KH	35	36	11.51	1.25	3.80	3.50	3.63/3.41
3	K	36	56	10.32	1.25	4.23	1.88	2.01/1.79
2	KH	36	56	10.32	1.38	4.23	1.88	2.01/1.79
1	KH	35	56	9.89	1.38	3.80	1.88	2.01/1.79

VIEW SHOWING PE VENTILATION OPENINGS



REGAL-BELOTT CORPORATION

TITLE

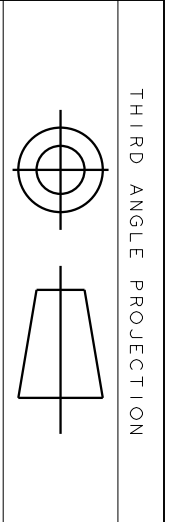
FORM N-GENERAL PURPOSE MOTOR-DRIP PROOF-  
WELDED BASE-BALL OR SLEEVE BEARING

SIGNATURES		DATE
MODEL		
DETAIL	JPK	08/24/76
CHECKED		
ENGRG		
MFG		
APPLIED PRACTICES	QUALITY	
DIMENSIONS ARE IN INCHES	ISSUED	MDP 07/25/96
MATERIAL	SOLID MODEL: 52A101998	

SIZE	DRAWING	SCALE	REF. No.	SHEET
A	A	1.000		1 of 1

52A101998

REV 11

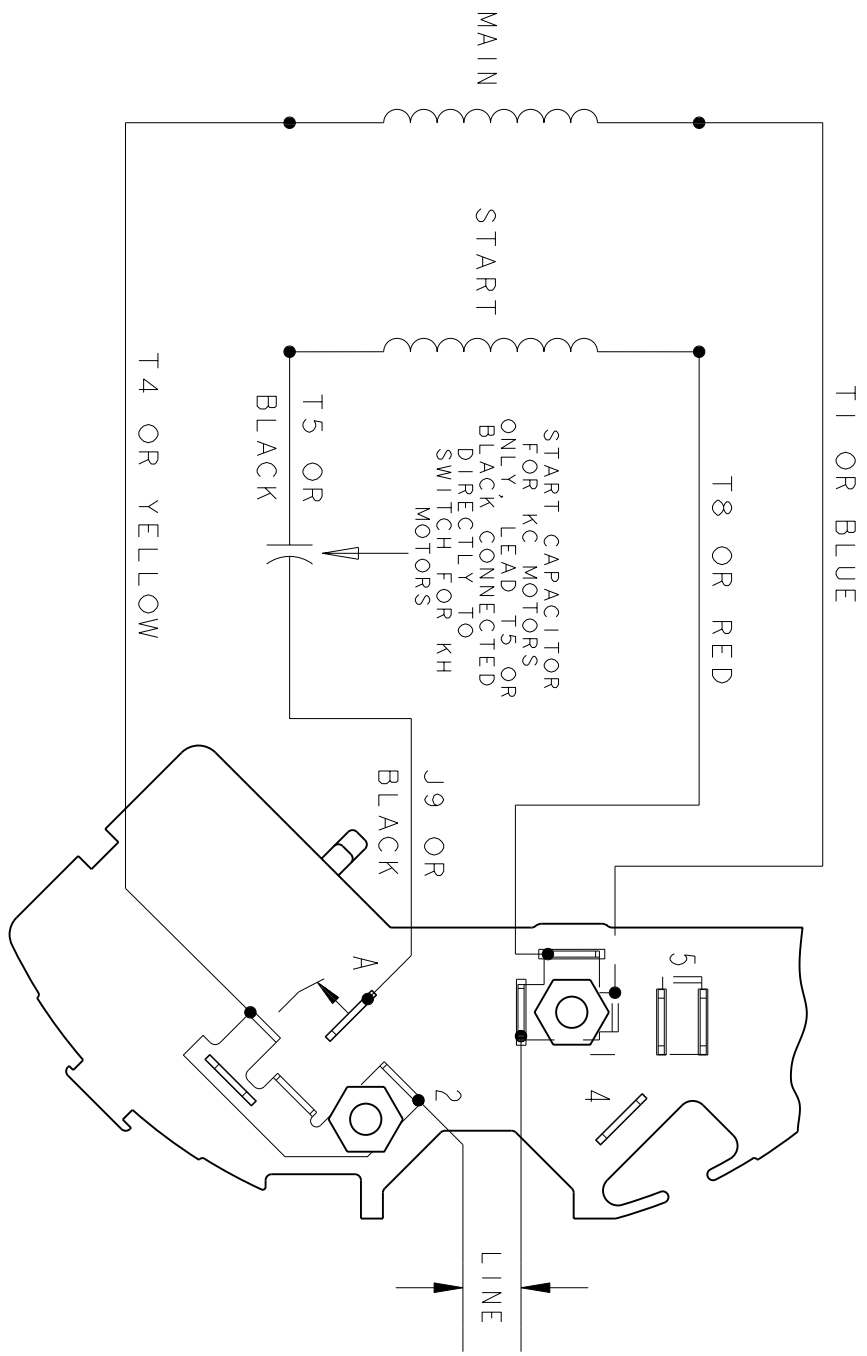


THIRD ANGLE PROJECTION

REVISIONS

REV.	DESCRIPTION	DATE	APPROVED
1	UPDATED FORMAT	11/10/05	MAM

EITHER ROTATION - SINGLE VOLTAGE  
TYPE KC, OR KH



NOTE #1 - TO REVERSE ROTATION INTERCHANGE BLACK (T5-KH OR J9-KC) AND RED (T8) LEADS.

NOTE #2 - WHEN MORE THAN ONE CAPACITOR IS USED CONNECT IN PARALLEL.

REF. DIAG. - 121A850		SWITCH (C) - 115D958AB	
CONNECTION LABEL - 52X332047			
SIGNATURES			
MODEL	M.D. PAPE	DATE	06/29/87
DETAIL			
CHECKED			
ENGRG			
MFG			
FOR ADDITIONAL INFO REFER TO:			
APPLIED PRACTICES	ISSUED	M.D.P.	06/29/87
DIMENSIONS ARE IN INCHES			
MATERIAL	SOLID MODEL: 52A105377AA		



REGAL-BELOLT CORPORATION

REGAL-BELOLT CONNECTION DIAGRAM

FME: 30 FRAME SWITCH REDESIGN

52A105377AA

SCALE: 1.000	REF. No:	SHEET 1 of 1
--------------	----------	--------------